

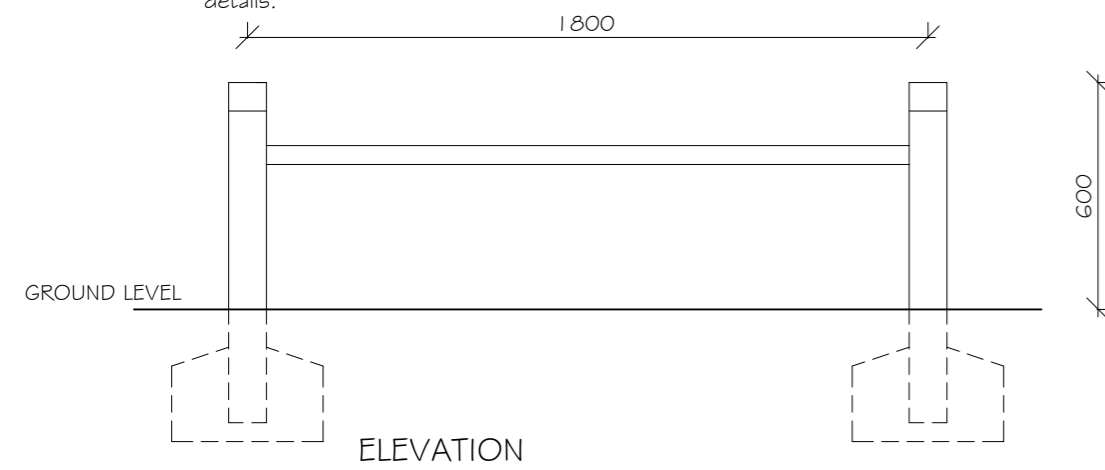
WATERMILL BRIDGE, NEWBURY.

0.6m KNEE / TRIP RAIL

0.6m high metal rail & timber post knee rail 'Trip Rail' to be constructed from 50Ø galvanised steel tube.

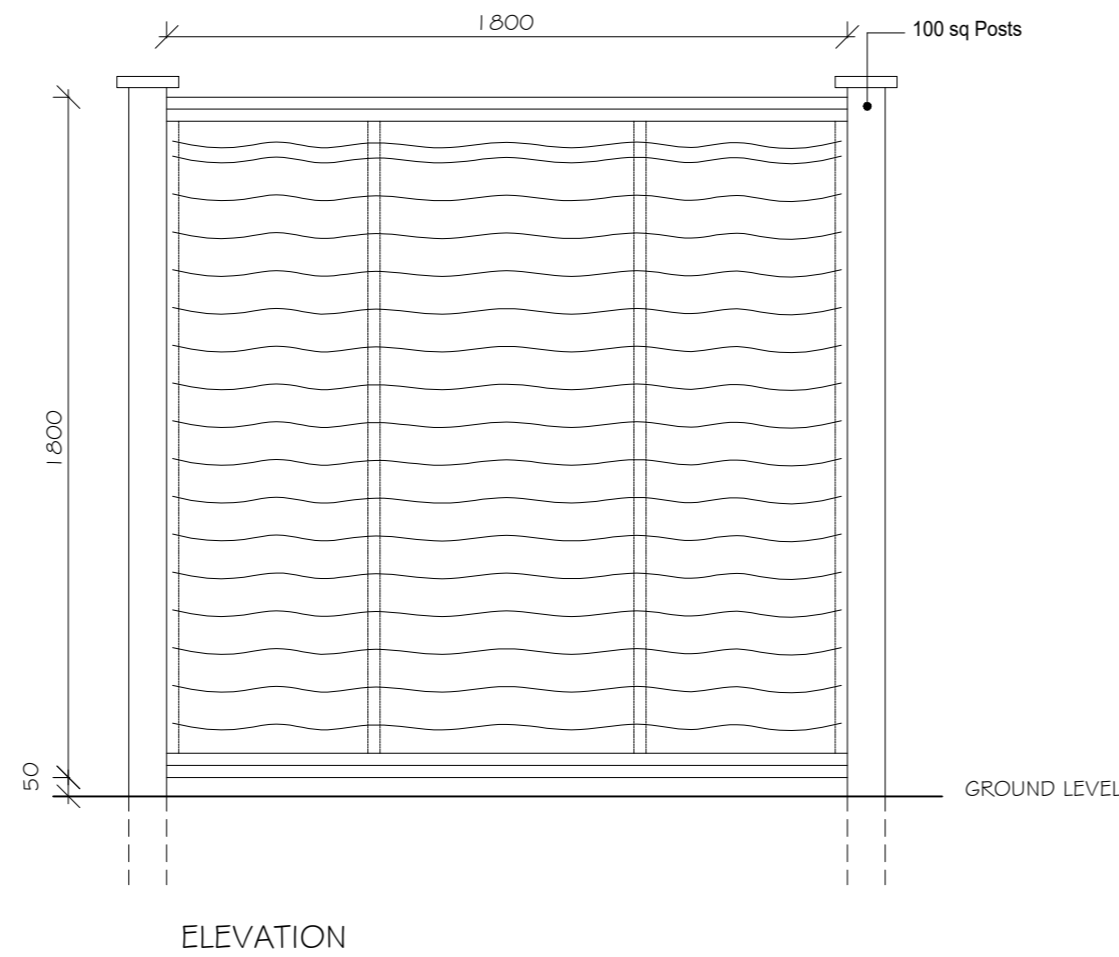
Rail hot dipped galvanised & painted gloss black.

All foundations to be to structural engineers details.



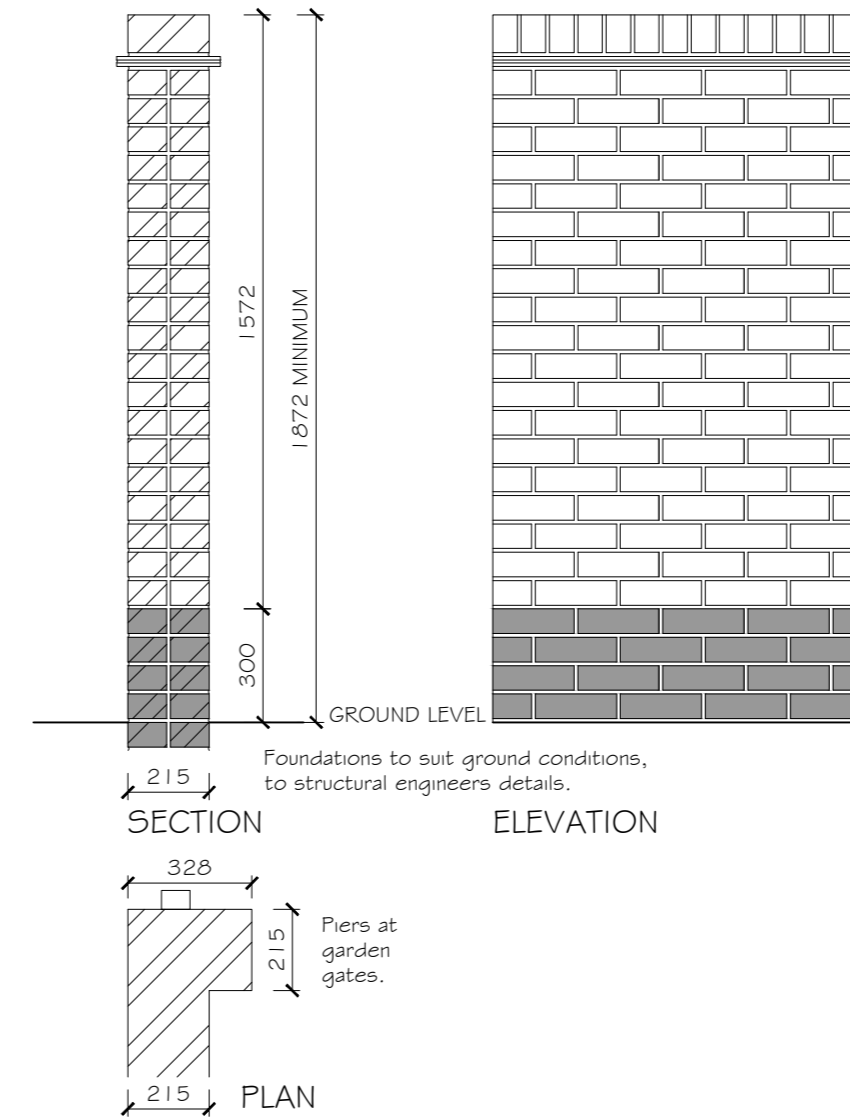
1.8m HIGH PANEL FENCE

All timber to be vacuum/pressure treated and finished with two coats brown stain.



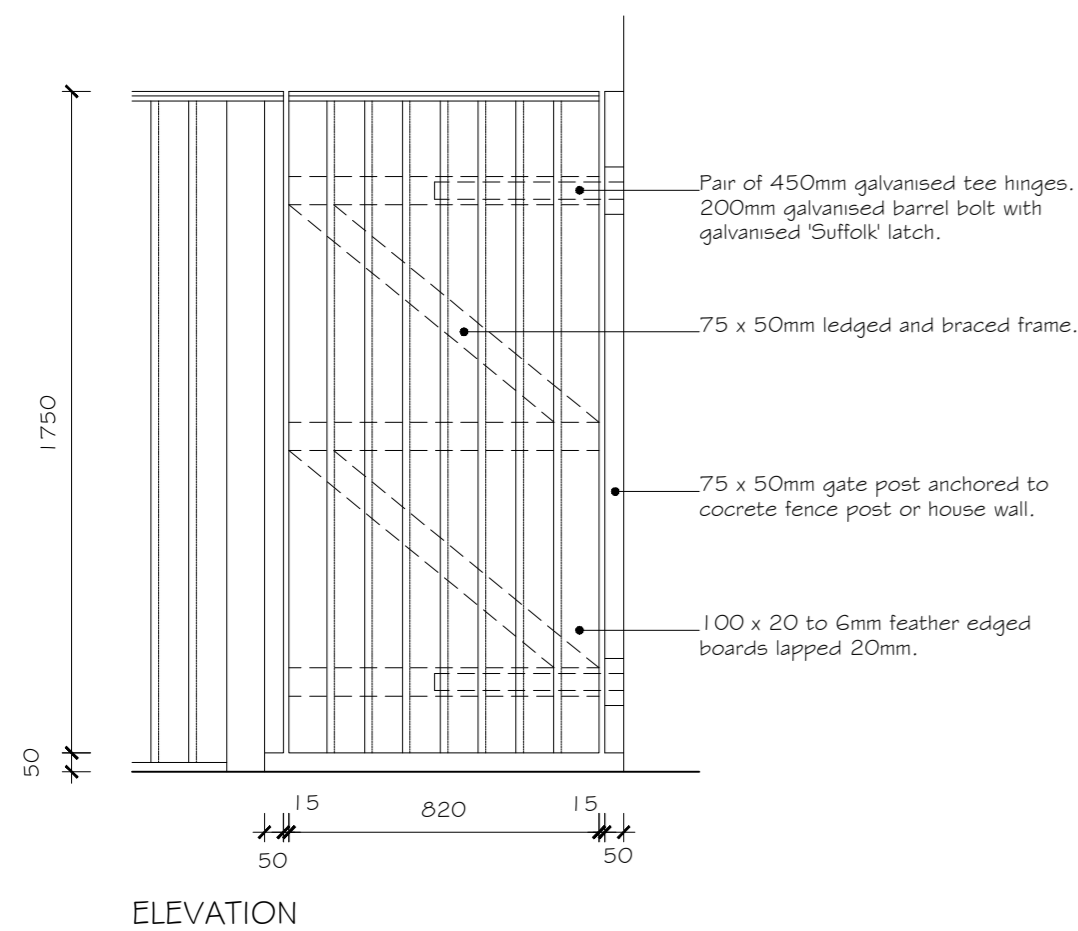
SCREEN WALL (1.87 meters high)

Coping to walls to be engineering quality contrasting brick on edge, on two courses of creasing tiles.
Walls to be 215mm wide tied collar wall in stretcher bond with bucket handle pointing.
10mm wide expansion joints at max. 6m centres, 3m spacing from any rigid return / corner.
Brickwork up to 300mm above ground level to be to BS3921 # 743 in 1:0:25:3 mortar with absorption not exceeding 7%.
Site design engineer to review site specific wind load conditions and verify design is suitable.



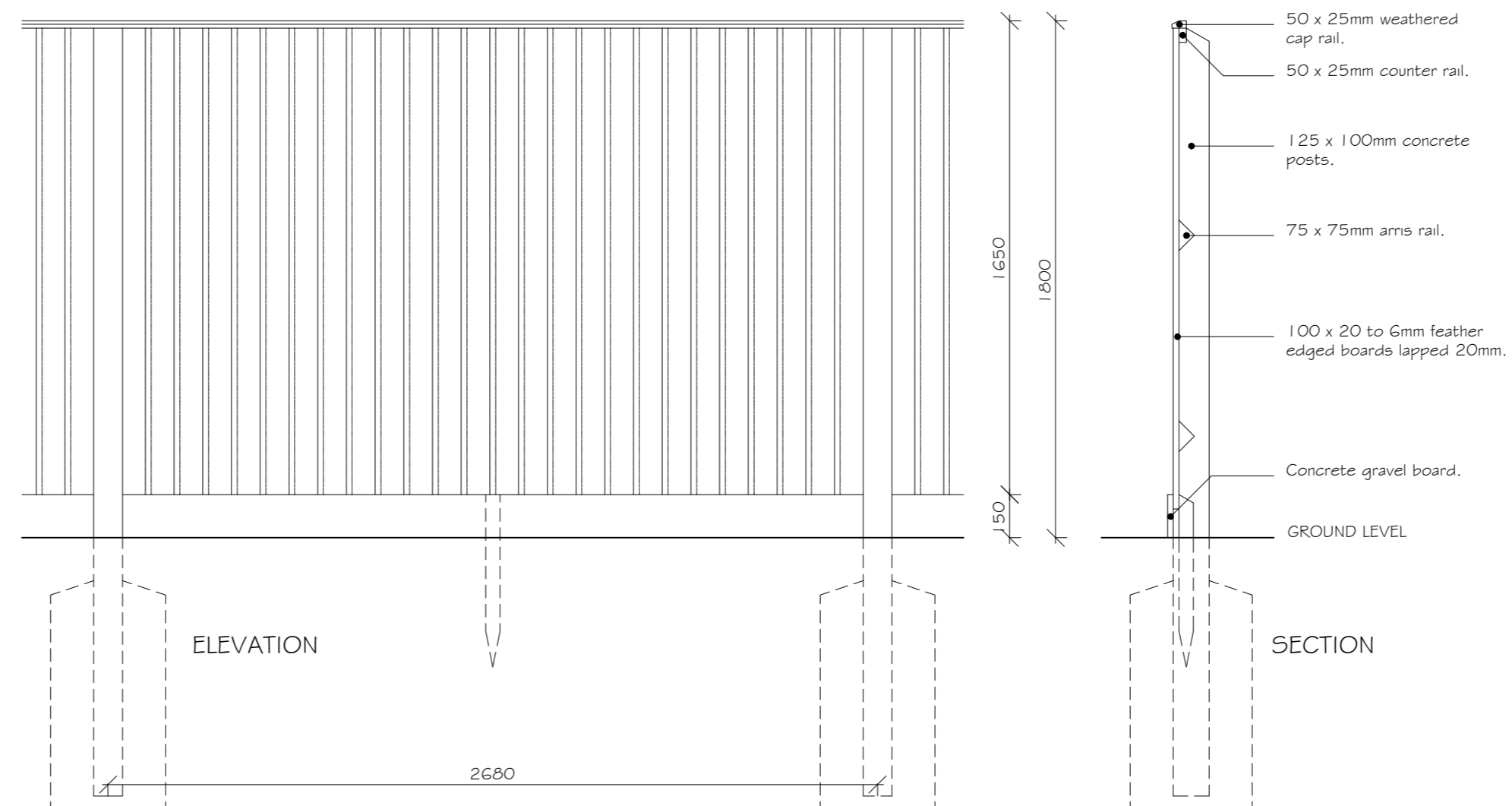
CLOSE BOARD GATE

All timber to be vacuum/pressure treated and finished with two coats brown stain.



CLOSE BOARD FENCE

All timber to be vacuum/pressure treated and finished with two coats brown stain. Foundations to structural engineers design.



WALL & FENCE DETAILS



PROJECT:
WATERMILL BRIDGE,
NEWBURY.

DRG TITLE:
WALL & FENCE DETAILS

JOB NO: 1559
DRG NO: 54
REV: -

SCALE: 1:20
DRN BY: KF

DATE: 10/21
CKD BY: TE

The Noble Consultancy Ltd
The Stables, Says Court Farm,
Badminton Road, Frampton Cotterell,
South Gloucestershire, BS36 2NY

t: 0844 745 2033
e: design@noble-consultancy.co.uk
w: www.noble-consultancy.co.uk

Innovative Residential Architecture