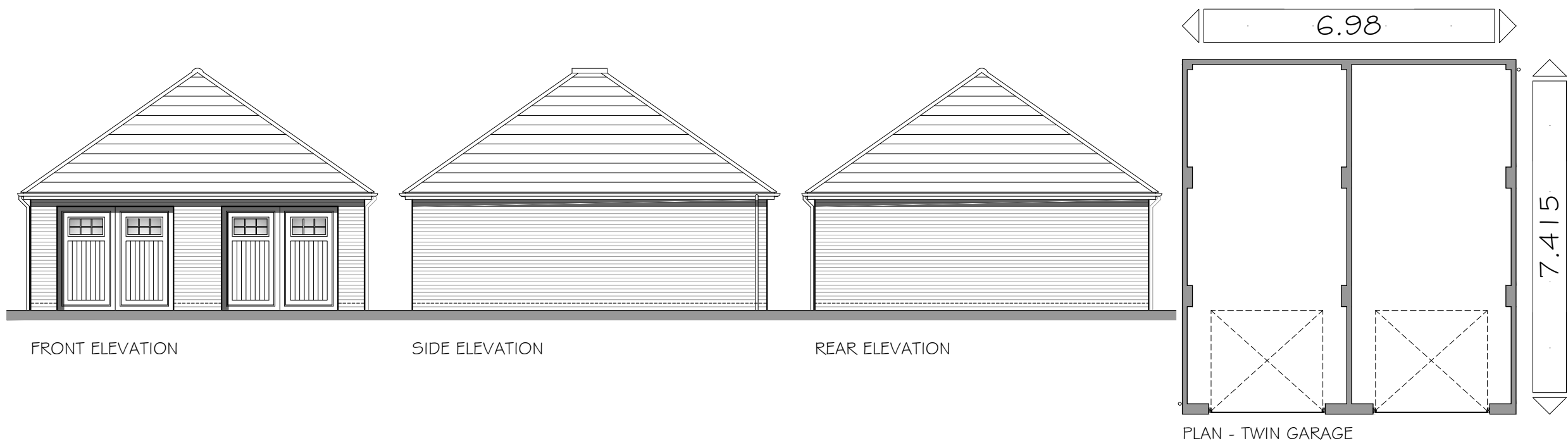
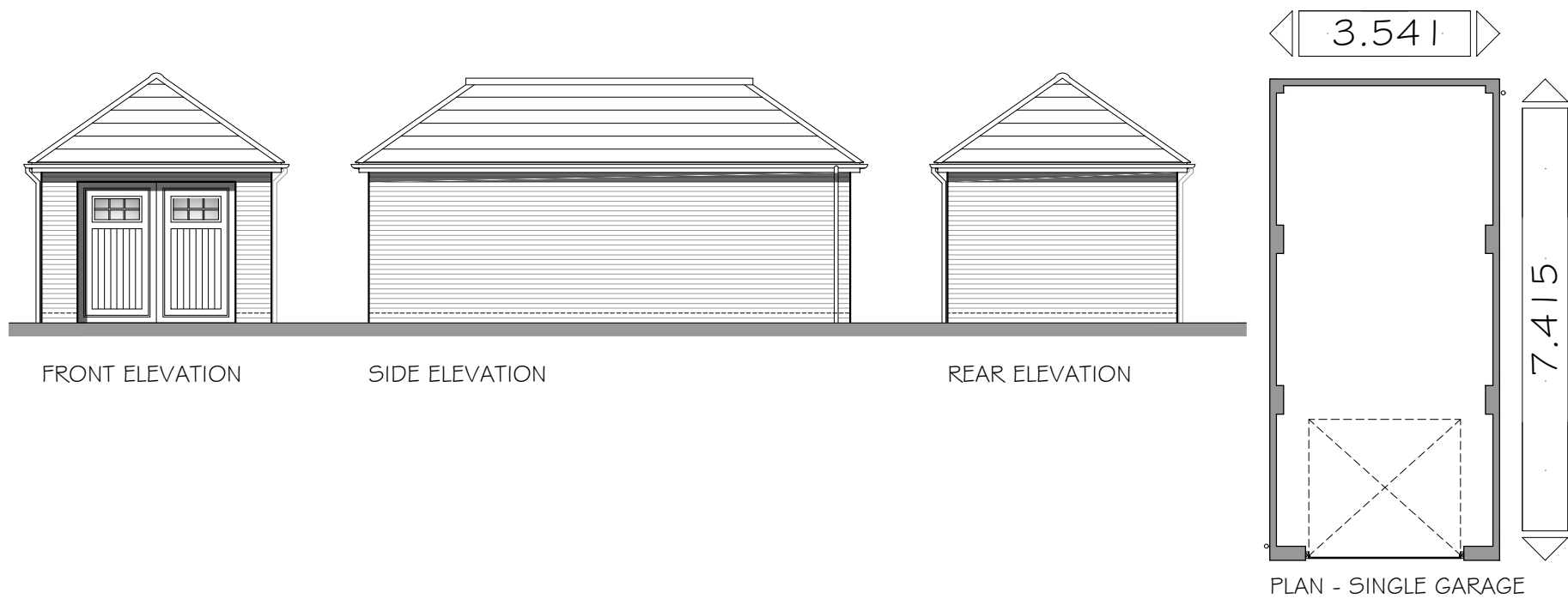


WATERMILL BRIDGE, NEWBURY.

GARAGE DETAILS

© This drawing and works depicted are copyright of The Noble Consultancy Ltd. and may not be reproduced or amended except by written permission. No liability will be accepted for amendments made by other persons.

0 1m 2m 3m 4m 5m Sheet Size A3
 Rev Date Int



PROJECT:
 WATERMILL BRIDGE,
 NEWBURY.

DRG TITLE:
 GARAGE DETAILS

JOB NO:	DRG NO:	REV:
1559	55-1	-
SCALE:	DRN BY:	
1:100	KF	
DATE:	CKD BY:	
10/21	TE	

THE NOBLE CONSULTANCY

The Noble Consultancy Ltd
 The Stables, Says Court Farm,
 Badminton Road, Frampton Cotterell,
 South Gloucestershire, BS36 2NY

t: 0844 745 2033
 e: design@noble-consultancy.co.uk
 w: www.noble-consultancy.co.uk

Innovative Residential Architecture